

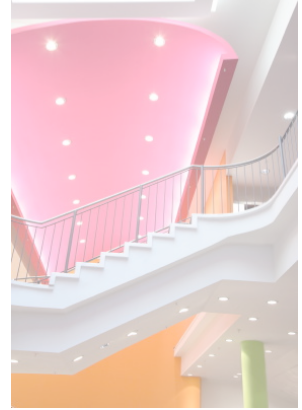
# WORKFORCE ARCHITECTS

## Workforce Architect Partner Network and Professional Development

Mob 0416 150 491  
Ph + 61 (08) 8387 9800  
Fax + 61 (08) 8387 9820  
PO Box 838 Happy Valley  
South Australia 5159  
[www.workforceblueprint.com.au](http://www.workforceblueprint.com.au)

Workforce Architects provides flexible professional Development opportunities in the following areas:

- Creativity and innovation
- Marketing, business development and products
- Partnerships and relationships
- Small business establishment and management
- Sustainability and work/life balance
- Workforce planning and workforce development



These domains of knowledge are customised to suit you in a state/territory, industry, regional, project or organisational/enterprise context. An up front skills evaluation will help you to identify your strengths and specific development needs with flexible methodologies for development including short burst workshops, mentoring/coaching, online communication and work based projects.

Workforce Architects provides you with the following services:

- Competency based job descriptions & framework design
- Skills stock-take
- Workforce demographics analysis
- Workforce of the future design
- Workforce plan development, gap analysis and gap closing strategies
- Workforce development and planning practitioner self-evaluation

### Want to be a Workforce Architect?

We are looking for people like you who are interested in providing workforce development and planning services as well as facilitating professional development activities. Selection of our Workforce Architects is based on skills and behavioral competency profiling and opportunities in geographic locations or industry sectors. Workforce Architects are supported by a partner network, marketing, professional development, policies and procedures, tools, resources and materials.

For further information on being a Workforce Architects Partner and our services please contact us on +61 (08) 8387 9800, 0416 150 491 or email [wendy@workforceblueprint.com.au](mailto:wendy@workforceblueprint.com.au); visit [www.workforceblueprint.com.au](http://www.workforceblueprint.com.au)



This logo signifies that for Wendy Perry and Associates Pty Ltd, all scope 1 & 2 emissions including specified scope 3 emissions, are annually audited and offset.